



A TEREX BRAND

PRODUCT SPECIFICATION

5400SE-SA

STATIONARY HORIZONTAL
GRINDER/CHIPPER




PALLETS • STORM DEBRIS • SLASH • DUNNAGE • REGRIND

KEY FEATURES...

The CBI Magnum Force 5400SE-SA horizontal grinder is a special application unit that fits the need of a customer looking for a smaller production rate than our standard 5400SE, with more affordability and the same durability. Producing at \$1.00 a ton, the 5400SE-SA is perfect for grinding pallets, storm debris, slash, dunnage, regrind, or yard waste. This machine is constructed with the same rugged frame that CBI built their name on. With an AR400 feed deck and high trough style sides, this feed can withstand the pounding it will surely take. The four strands of WDH welded drag chain provide optimal feeding with the longevity that every customer needs. The AR 400 top feed roll is covered with 150 carbide teeth to ensure that anything in its path will be pulled into the hog box for destruction.


The hog box is a heavily reinforced tank with bolt-on AR 450 wear liners to extend the box life. Inside the hog box is a forged steel rotor with twenty high grade steel plate hammers. These hammers are heavily welded to machined surfaces on the rotor for perfect alignment and consistent feeding across the rotor. The hammers are surrounded by fins that help protect the machine from over-feeding itself and also protect the hammers from large pieces of steel that may find its way into the feed. The anvil and grate liner are 2.1/2" thick and 1.1/4" thick AR 450 plate, respectively. This machine can be adapted to accept any style of CBI rotor (steel segmented, forged drum, or chipper drum).

The rotor is driven by a crusher duty style 300, 400, or 500 HP electric motor. The cast iron sheaves are driven by a matched set of Kevlar belts for extended life and reliability. With an optional overband magnet and Metal Detection System (MDS), you can be sure no steel will pass into the final product. Run by a main control panel and remote operator interface panel, the machine is simple to operate and user-friendly. A 7" touch screen interface displays complete system status including the motor status, alarm information, emergency stop locations, operating hours, system controls, and other vital information for the end user.




Steel Drum

Sixteen or twenty 6"x 8" striker plates held in place by two 1-1/4" bolts, designed for contaminated demolition debris, railroad ties and MSW.




Forged Drum

3" thick rotor with twenty or twenty-four weld on Replace-A-Face™ hammers with reversible tips for forestry debris and mulch manufacturing.



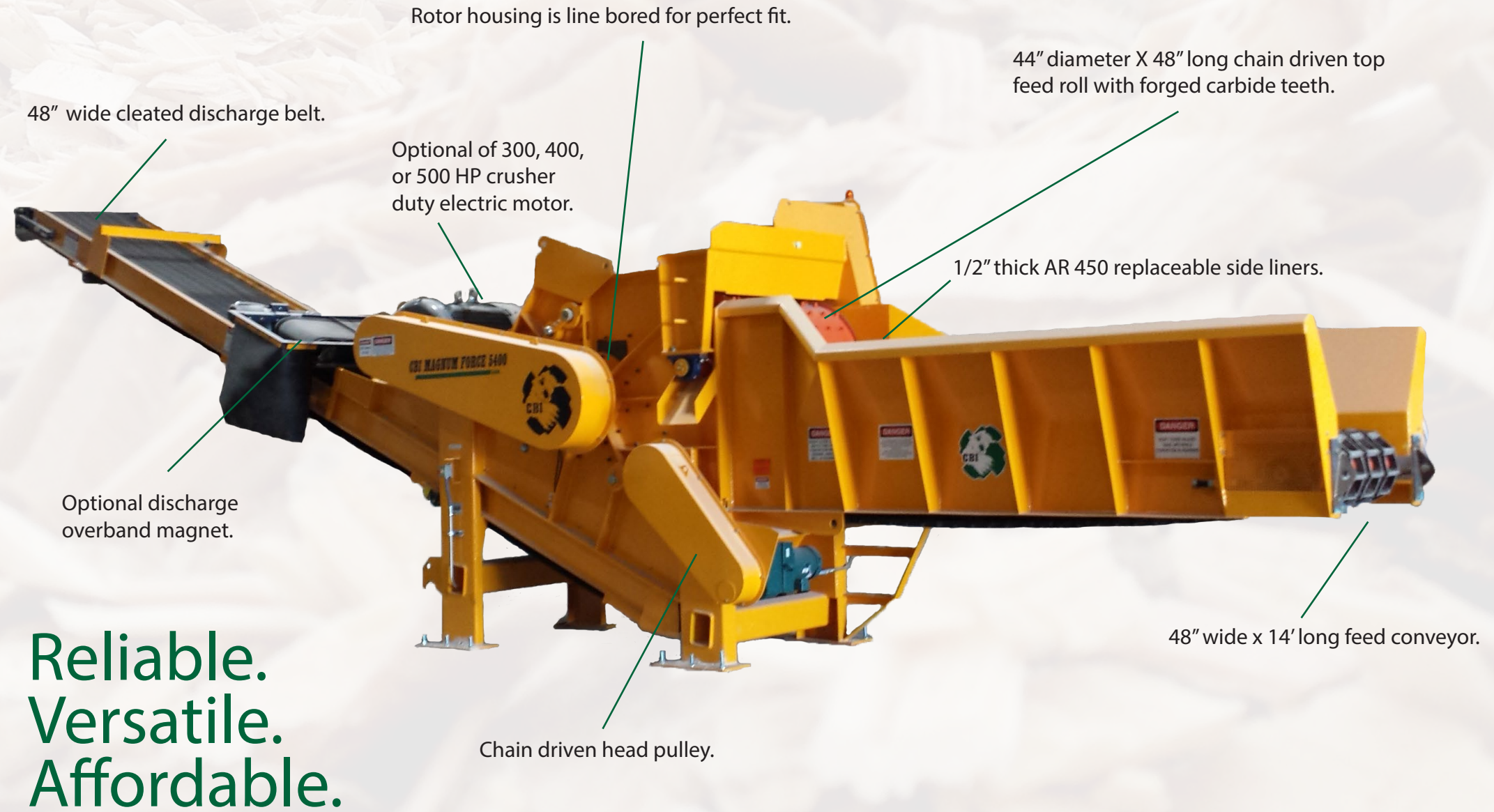
2-Pocket Chipper

Two rows of knives for average chip lengths of 3/4" to 1-1/4" to produce fuel chips from stem wood.



4-Pocket Chipper

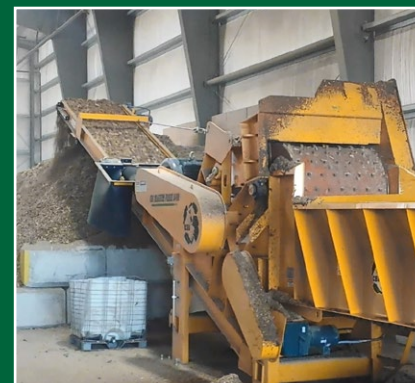
Four rows of knives for short chip lengths of 1/8" to 1/2" to produce short chips from stem wood suitable for pelletizing or pulverized fuel.



Ships completely on a beam trailer with minimal assembly needed on site.



Consistent, cost-effective production



Cleated discharge belt



Optional discharge overband magnet



METAL DETECTION SYSTEM



A problem for any industrial grinder has to do with tramp metal entering the hog box and causing significant damage, which leads to downtime. The Metal Detection System™ (MDS) engages within milliseconds whenever the grinder's rotor makes contact with tramp metal.

The rotor is monitored by an adjustable electronic sensor to alert the control system when tramp metal is detected. It will automatically stop the rotor, raise the top feed roller and reverse the infeed to allow the operator to find the tramp metal.

TRANSPORT DIMENSIONS

Width: 9'-1"
Height: 13'-6"
Length: 49'-7"
Weight: 45,500 lbs. (approximately)

DISCHARGE CONVEYOR

Width: 48"
Length: 35'
Height: 15'

OPTIONAL

Overband magnet
Metal Detection System (MDS)

ENGINE/DRIVE

400 or 500 HP crusher duty motor
Matched set of poly band 8V drive belts (optional Kevlar)

CONTROLS

Parker IQAN™
Remote control operated

INFEED

Width: 48"W
Height: 5' 4" H
14' strands heavy-duty drag chain
Top Feed Roll: 44" diameter x 48" wide

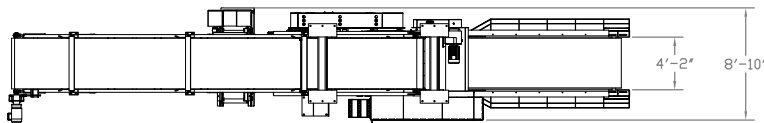
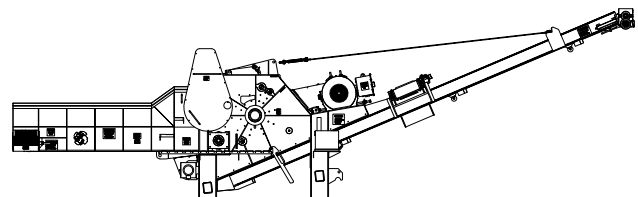
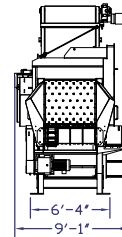
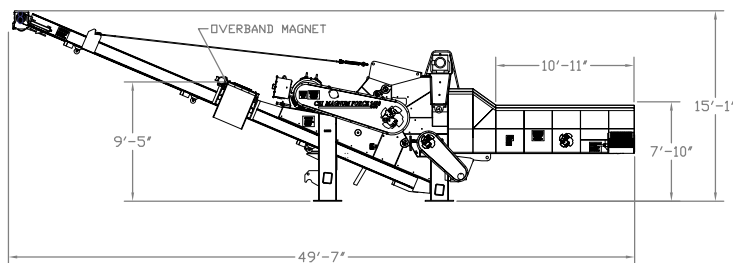
HYDRAULICS

3 HP hydraulic power unit
Single top feed roll cylinder

ROTOR

Width: 48"
Diameter: 40"
Shaft: 6" diameter

Specification subject to change without notice.



Continental Biomass Industries

World's best stationary and portable material recovery systems.

22 Whittier Street, Newton, NH, 03858
Phone: (603) 382-0556 Fax: (603) 382-0557
Web: cbi-inc.com Email: info@cbi-inc.com

Distributed by: